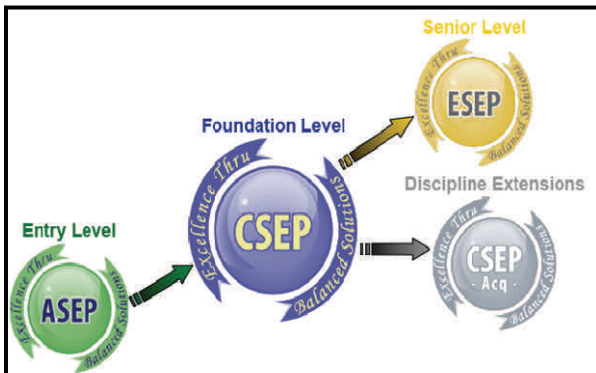


Systems Engineering Certification

Associate Systems Engineering Professional (ASEP) certification is designed for students and entry level engineers to demonstrate an introductory knowledge level of Systems Engineering to employers and customers alike.



INCOSE web sites:

INCOSE Home

<http://www.incose.org/>

Starting a student division

<http://www.incose.org/chapters/studentdivisions.aspx>

Existing Student Divisions

Arizona State University

Cornell University

George Mason University

George Washington University

Missouri University of Science and Technology

Stevens Institute

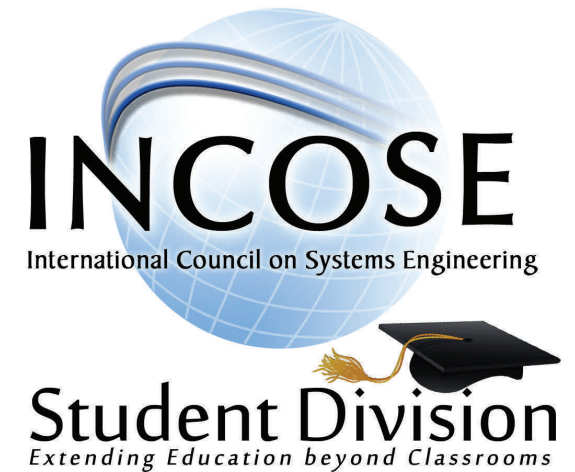
University of Central Florida

University of Texas El Paso

University of Virginia

University of Southern California

University of Pennsylvania



**Advocating
Systems Engineering
within the
Academic Environment**



Mission

Advocate systems engineering to students around the world.

Vision

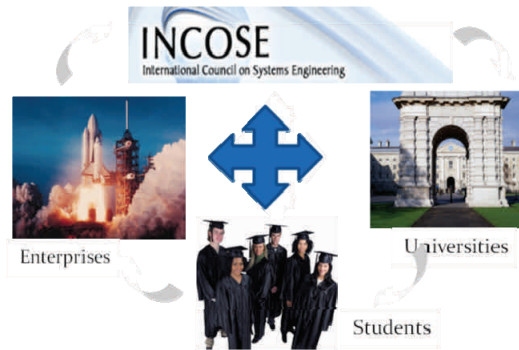
The INCOSE vision is to be the world's premier organization advancing the art and practice of systems engineering. The Student division complements this vision by providing students opportunities to publish and present trending research in systems engineering from around the world.

Realizing the Vision

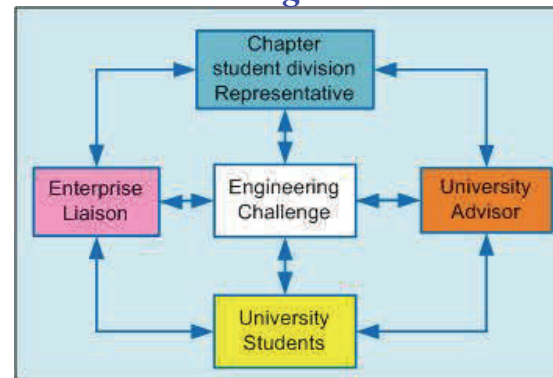
The Student Division makes this a reality through the development of a student division at each university using the 4-Way Benefit Model stakeholders dedicated to:

- Collaborate education, research, and enterprise engineering trends for the mutual benefit of all stakeholders and society.

4-Way Benefit Model Stakeholders



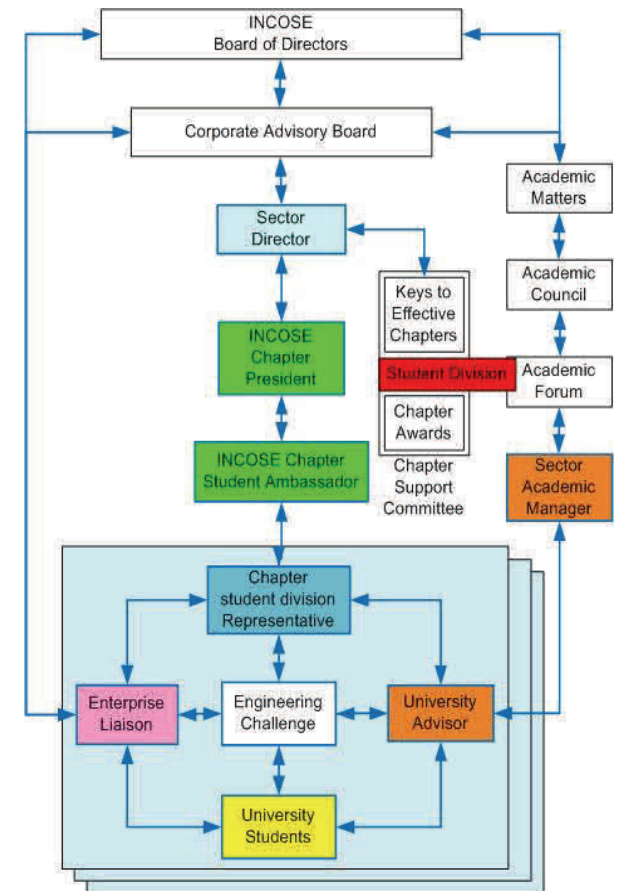
Mentoring Network



An Engineering Challenge is the catalyst to establish a mentoring network at the university to:

- Bring systems engineering to life through applied projects.
- Integrate professional mentors
- Merge real-world problems and curriculum to extend education beyond the classroom.

Student Division Architecture



The Student Division architecture is optimized to reach all areas of the INCOSE organization :

- Corporate Advisory Board
- Academic Matters
- Sponsoring Chapters
- INCOSE Members