

INCOSE: A Better World Through a Systems Approach

*The global professional association
for systems engineers*



International Council on Systems Engineering
A better world through a systems approach

www.incose.org

*Presented By New Member Engagement
Team (NMET) (nme@incose.net)*



Purpose and Agenda

- Welcome/Introduction (5 minutes)
- INCOSE Sectors and Chapters (20 minutes)
- Guide Breakout Session (25 minutes)
- Welcome Center Café event Closeout (5 minutes)



New Member Welcome Center

Resources for New Members

Recordings and presentations from past New Member Café Events

About INCOSE Overview

Ways to engage in INCOSE

Learning and Development

Publications

Growing your Career

Collaboration Portal "Connect" Store Contact us

INCOSE

New! Search ENHANCED BY Join us Login

A better world through a systems approach

INCOSE Privacy Statement INCOSE Membership Leadership & Organization INCOSE Foundation INCOSE Recognition **New Member Welcome Center**

Principles & Values Strategic Objectives Transformation Volunteers Policies and Bylaws Contact Us Technical Leadership Institute Community

INCOSE New Member Welcome Center

Welcome! The International Council on Systems Engineering (INCOSE) is a not-for-profit membership organization founded in 1990 to develop and spread the interdisciplinary principles and practices that enable successful systems. We have grown to more than 19,000 members meeting in over 65 local chapters in over 75 countries which translates to boundless opportunities to network, learn and have fun.

As members we represent a broad spectrum – from student to senior practitioner, from technical engineer to program and corporate management, from science and engineering to business development. We work together to advance our technical knowledge, exchange ideas with colleagues, and collaborate to advance systems engineering. There are many exciting challenges ahead and we are glad you are joining us!

Below is an overview of INCOSE – our organization, available resources and opportunities for involvement. Use the links provided to learn more.

For new member questions and inquiries, contact us at nme@incose.net.

19000+ MEMBERS

65 CHAPTERS

50 WORKING GROUPS

3976 CERTIFIED

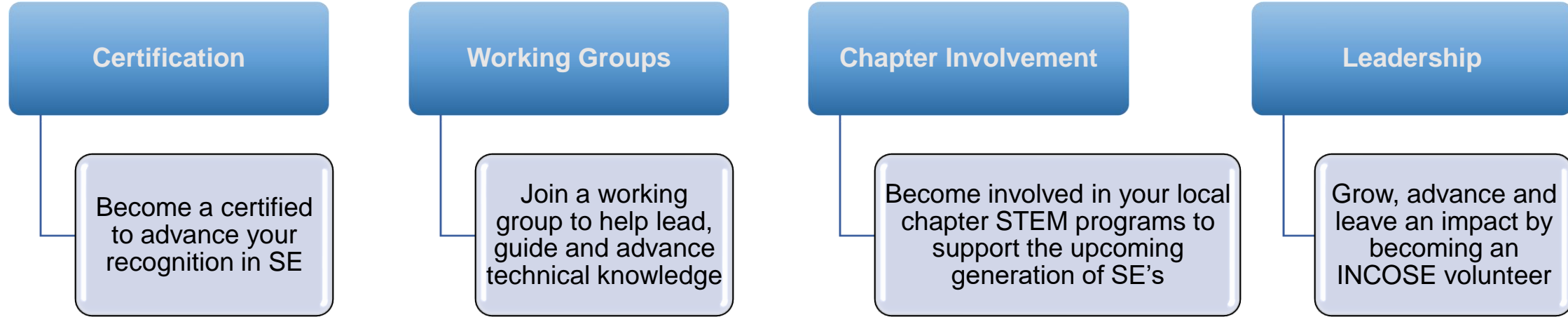
www.incose.org/welcome

Welcome Center cafes aim to onboard, orient and communicate with new members in their initial INCOSE journey
New Member Guides are senior, experienced INCOSE members who connect and engage with new members

New Member Yammer Community

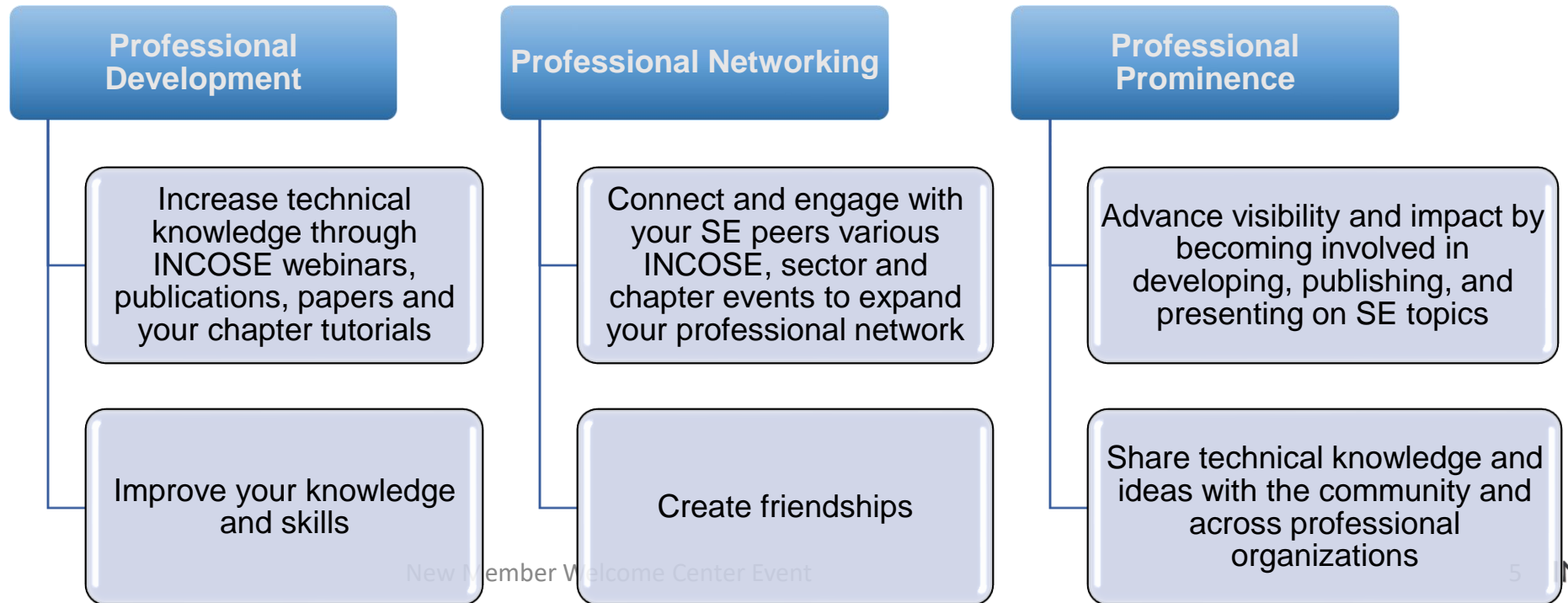
- New Yammer community will be created
- This is a community for YOU, INCOSE New Members to network and discuss topics of interest
- www.yammer.com and login with your @incose.buzz account when assigned

The screenshot shows the Yammer interface for a community named 'New Members'. The top navigation bar includes the Yammer logo, a search bar, the community name 'New Members', and a toggle for 'New Yammer'. The left sidebar contains navigation options: Home Feed, Inbox, Notifications (with a blue notification badge), Favorites, and My communities (listing 'New Members', 'All of INCOSE', 'Create a Community', and 'Discover Communities'). A notification box in the sidebar reads: 'Improve your Yammer experience by creating a list of your favorite communities.' The main content area features a green header with a purple 'NM' badge, a 'Joined' button, and a 'Start a discussion' prompt with a 'SK' icon. Below this are options for 'Discussion', 'Question', 'Praise', and 'Poll'. The right sidebar shows 'Members 5' with profile pictures, an 'Info' section with an 'Edit this section' link, a 'Pinned' section, and a 'Create Live Event' button.



Why INCOSE?

Incose.org/career



Vision and Mission

VISION: A better world through a systems approach

MISSION: To address complex societal and technical challenges by enabling, promoting, and advancing Systems Engineering and systems approaches

OBJECTIVE: Global leader for systems engineering professionals for career development

FUTURE: Lead the future of systems engineering, academically, in emerging domains, and in practice

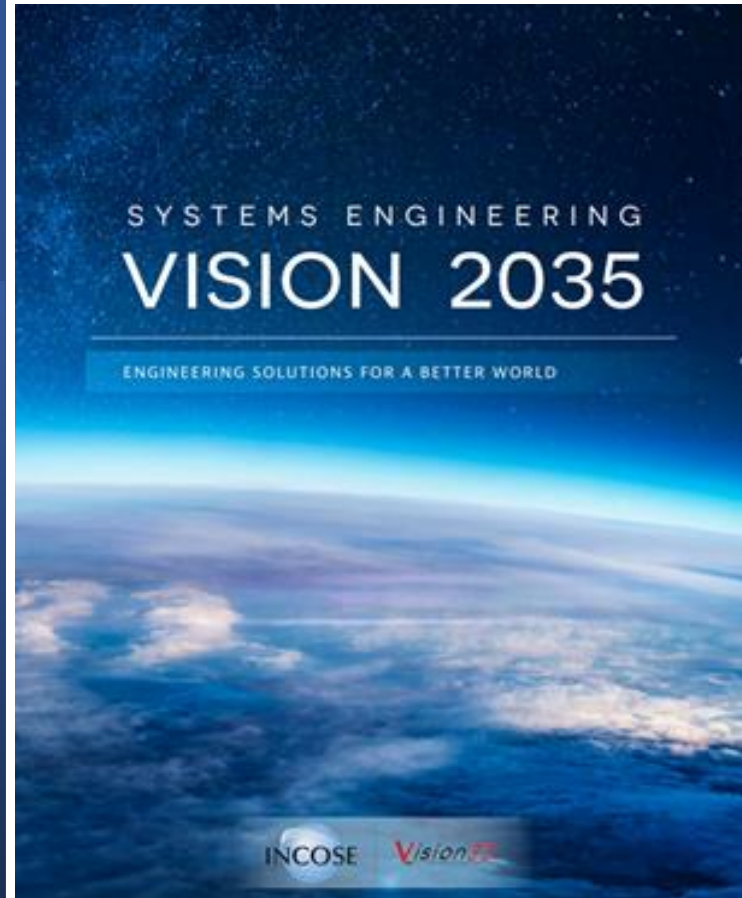


INCOSE Web Site www.incose.org

- The INCOSE website IS the way to access the latest information and resources
- Visit www.incose.org to log into your INCOSE account, access your profile, assign your INCOSE chapter, access publications and so much more!



Systems Engineering Vision 2035



incose.org/seivision

This Systems Engineering Vision was sponsored by INCOSE and produced by a team of leaders from the systems community, with inputs from across industry, academia, and government.

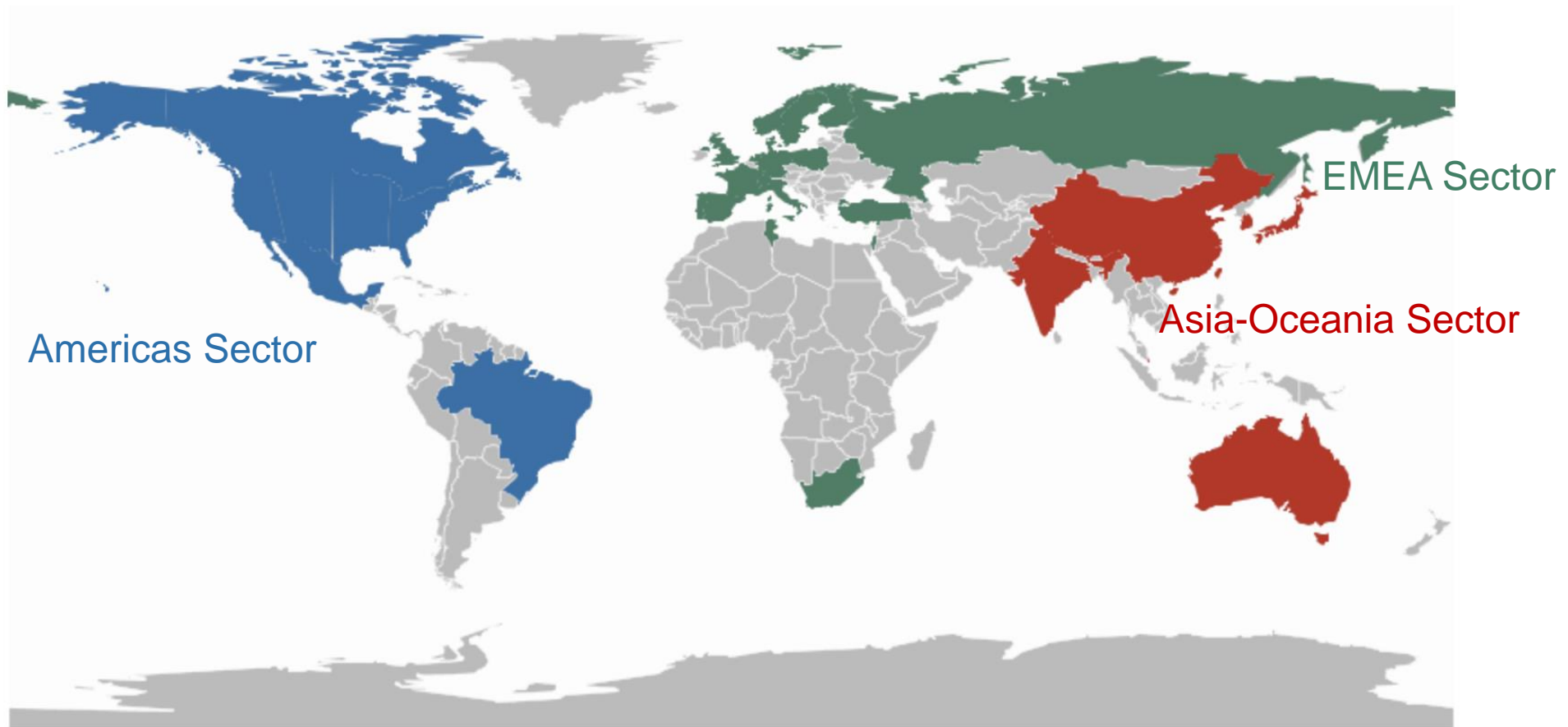
The Systems Engineering Vision 2035 addresses:

- The Global Context for Systems Engineering
- The Current State of Systems Engineering
- The Future State of Systems Engineering
- Realizing the Vision

We encourage you to work with INCOSE to help realize this vision.

The complete Systems Engineering Vision 2035 is available as a website and pdf at www.incose.org/seivision.

INCOSE: The International Council on Systems Engineering



Global Impact

Why INCOSE?
A better world through a systems approach.

- 19,400 Members and CAB Associates
- 124 Corporate Members
- 50 Working Groups
- 65 Chapters Worldwide
- 76 Countries with Active Members

Why INCOSE?
A better world through a systems approach.

INCOSE *Building the Future of Systems Engineering*
Annual Impact Statement 2021
Inspiring and guiding the strategic direction of systems engineering across diverse stakeholder communities.

- We are the premier choice of systems engineers for professional development.
- We are the premier choice of 19,400 members and CAB associates, we are inspiring the future of systems engineering.
- We interact with systems engineers across the globe on a daily basis to set standards and solve problems.

19,400 Members and CAB Associates
124 Corporate Members
50 Working Groups
65 Chapters Worldwide
76 Countries with Active Members

Vision35
INCOSE
SYSTEM

Why Join INCOSE?

INCOSE is the global Systems Engineering professional society – providing the **opportunity for life-long learning** in systems approaches

A community of peers, **resources** for your **career**, and a place to be a **leader**

INCOSE members stand out and are often sought after as **experts**. INCOSE members share practices and learn from each other.

INCOSE members create **products**, produce **events** and represent the organization in international forums.

INCOSE members increase the body of knowledge and **advance the practice** of systems engineering.

Network with nearly 19,400 members in 76 countries

Increase your professional stature with the INCOSE Systems Engineering Professional **Certification**



Membership Benefits



A global network of colleagues who understand systems engineering



Certification opportunities



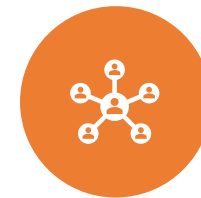
Access to quarterly ePublications, *INSIGHT* and *Journal of Systems Engineering*



Electronic version of the Systems Engineering Handbook



Collaborate with experts and practitioners **worldwide**



Exclusive access to INCOSE Connect, the collaborative space for **INCOSE** Members Only

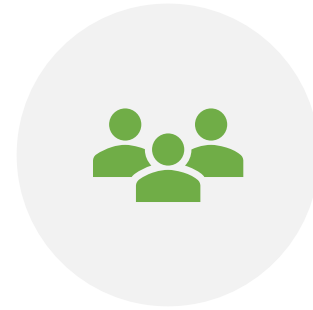


Member discounted registration to the International Workshop and International Symposium.

Working Groups



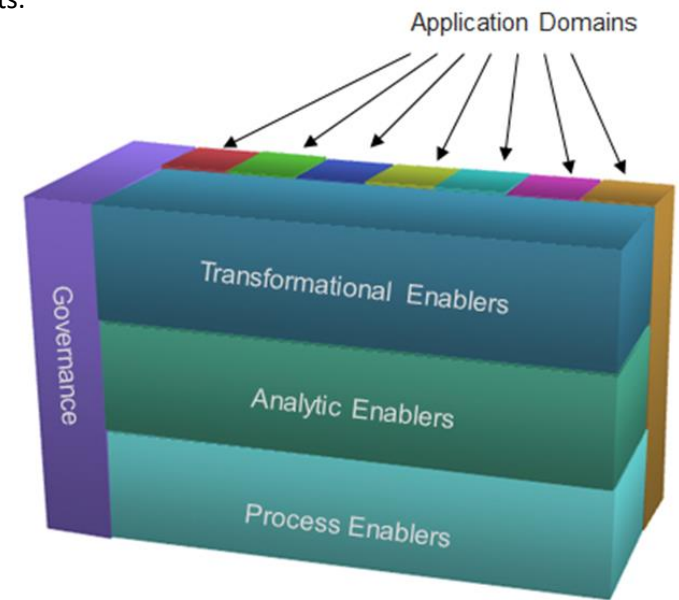
Working groups are the resource practitioners need.



Discuss, collaborate, share in person, and online across more than 60 working group in INCOSE with a wide diversity of interests.



INCOSE working groups create products, present panels, develop and review standards.




Working Group Members

- Bring value to other INCOSE stakeholders in your interest area
- Build expertise and contacts
- Help develop and review international standards
- Share information across Working Groups
- Create products to advance the state, art and practice of Systems Engineering.



Join and Participate in INCOSE Working Groups

- How to Join a Working Group (found on the working group page)
 - Membership in Working Groups is open to any INCOSE member. To join a group:
 - <http://profile.incose.org>
 - Scroll to the bottom left section titled "My Committees and Working Groups"
 - Click the link for "Browse / Join a Working Group"
 - Find the desired Working Group and click on View to see roster; the Join option is at the bottom of the page
 - Additionally, email the Working Group leaders by clicking on their name(s) from the Working Groups page and sending them an email expressing your interest!



The screenshot displays a grid of 20 working groups, each with a title, a list of members, and a role. The groups are:

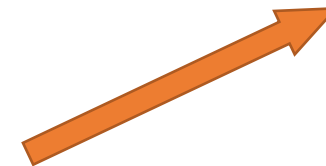
- Resilient Systems: Ken Cureton / John Briss (Analytic Enablers)
- Risk Management: Bob Parro / Jack Stein (Process Enablers)
- SE in Early Stage Research & Development: A. Hodges / N. Lombardo / H. Hahn / M. M. (Transformational)
- SE Tools Database: John Nallon (Transformational)
- Small Business Systems Engineering: Angela Robinson / Claude Laporte / Ken Paoli (Transformational)
- Smart Cities Initiative: Jennifer Russel (Initiative)
- Social Systems: Erika Palmer (Analytic Enablers)
- Soft Skills: Sean McCoy / J. Wojcik / C. Whitcomb (Transformational)
- Space Systems: David Kaslow (Application Domains)
- System of Systems: Alan Harding (Analytic Enablers)
- System Safety: Duncan Kemp / Meaghan O'Neil / Russell Kubycheck (Analytic Enablers)
- Systems and Software Interface: Nick Guertin (Transformational)
- Systems Engineering Quality Management (SEQM): Barclay Brown (Process Enablers)
- Systems Science: Javier Calvo (Transformational)
- Systems Security Engineering: Rick Dove (Analytic Enablers)
- Telecommunications: John Risson (Application Domains)
- Tools Integration & Model Lifecycle Management: John Nallon (Transformational)
- Training: Gabriela Coe / John Clark (Analytic Enablers)
- Transportation: Dale Brown / Denis Simpson / Allison Ruggiero (Application Domains)
- Value Proposition Initiative: Juan Amenabar / Ken Harmon (Analytic Enablers)

Below the grid, there is a section titled "How to Join a Working Group" with the following instructions:

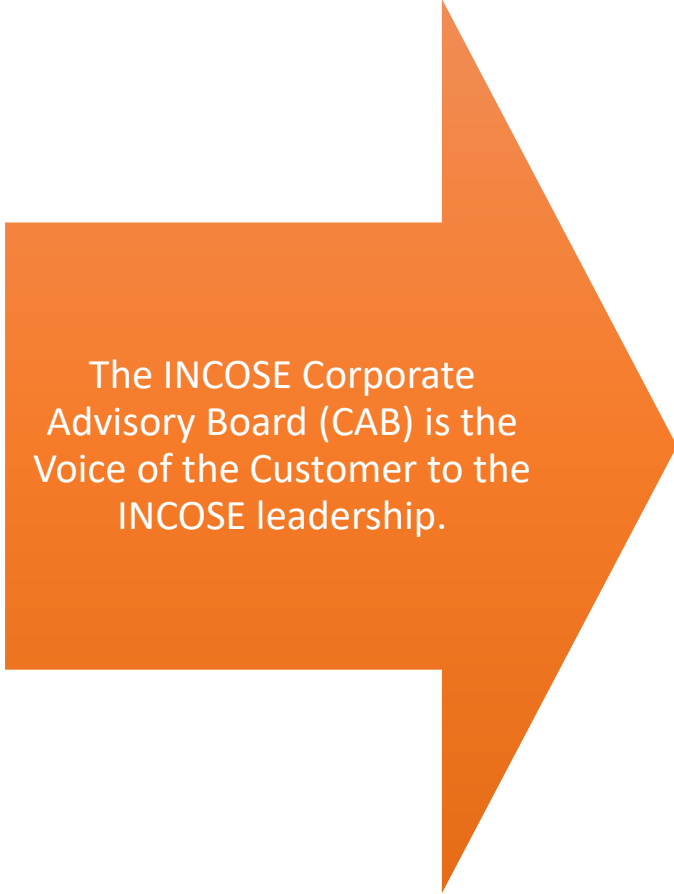
Membership in Working Groups is open to any INCOSE member. To join a group:

- Log into your INCOSE account
- Go to your Profile Page, and scroll to the bottom left section titled "My Committees and Working Groups"
- Click the link for "Browse / Join a Working Group"
- Find the desired Working Group and click on View to see roster; the Join option is at the bottom of the page
- Additionally, email the Working Group leaders by clicking on their name(s) from the Working Groups page and sending them an email expressing your interest!


The URL <https://www.incose.org/incose-member-resources/working-groups> is provided at the bottom.



Corporate Advisory Board



The INCOSE Corporate Advisory Board (CAB) is the Voice of the Customer to the INCOSE leadership.



The CAB provides strategic guidance to technical leadership, leading to the development of systems engineering products and input to standards to meet their needs.

WHY JOIN THE INCOSE CORPORATE ADVISORY BOARD?

- Corporate Advisory Board membership allows your organization to guide the direction of the discipline.
- Employees can gain access to the state-of-the-art products.
- Align with peers and fellow industry leaders, grow your global footprint, and learn about how other industry leaders are applying systems engineering to solve business problems.
- Gain better access to talent – find and hire competent, certified Systems Engineers through your INCOSE connection



Corporate Advisory Board

- The INCOSE Corporate Advisory Board (CAB) is the voice of the industry to the INCOSE leadership, leading to the development of systems engineering products and input to standards to meet their needs.
- Learn more about the CAB and access application forms at www.incose.org/cab
- Why should a **company** join the INCOSE CAB?
 - CAB membership allows your organization to guide the direction of the discipline.
 - Employees can gain access to the state-of-the-art products.
 - Align with peers and fellow industry leaders, grow your global footprint, and learn about how other industry leaders are applying systems engineering to solve business problems.

Academic Council

Branch of the Corporate Advisory Board facilitating discussion and exploration of issues relevant to academia and strategic collaborations within INCOSE.

A well-educated workforce is key to Global Prosperity

Council member organizations offer bachelors, masters, and doctorate degrees in systems engineering and related programs.

Active in advancing the state-of-the-art of systems engineering through academic programs.

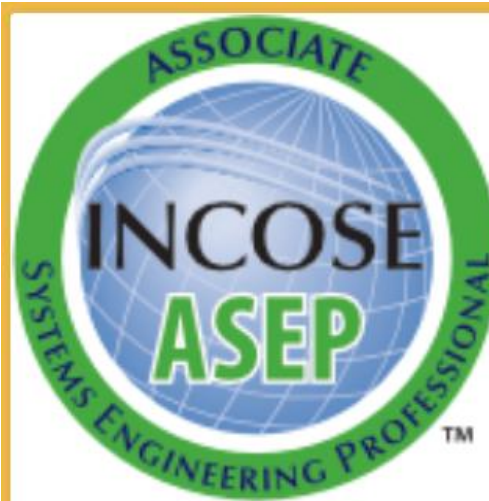
INCOSE Student Divisions

Undergraduate and/or graduate students who wish to become actively involved in INCOSE while enrolled in an accredited course of study at a college or university

Student Divisions are operated as a component of a nearby chartered INCOSE chapter, and require:

- 1) a student body interested in becoming involved with INCOSE,
- 2) a faculty member who is a member of INCOSE and willing to act as the Division mentor and liaison between INCOSE and the university, and
- 3) active sponsorship and participation by a chartered INCOSE chapter.

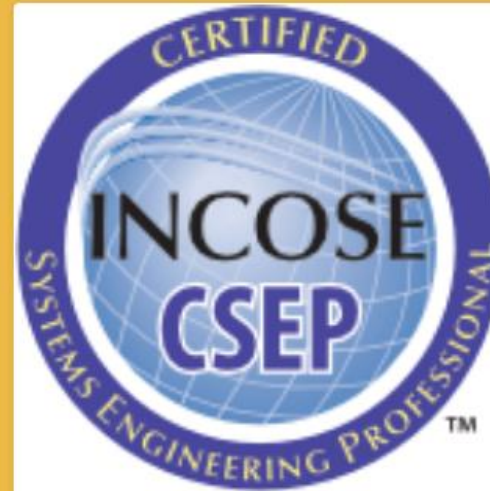
Certification



Associate Systems Engineering Professional

College students and those new to systems engineering may be qualified as Associate Systems Engineering Professionals (ASEP).

[LEARN MORE](#)



Certified Systems Engineering Professional

Working engineers who can perform independently in a variety of systems engineering functions can be recognized as Certified Systems Engineering Professionals (CSEP).

[LEARN MORE](#)



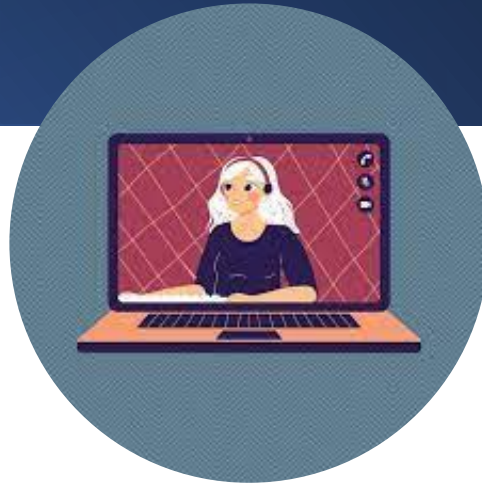
Expert Systems Engineering Professional

Individuals who solve the most challenging, technical problems and are seen as leaders in their community can become Expert Systems Engineering Professionals (ESEP).

[LEARN MORE](#)

Conferences and Connections

<https://www.incose.org/events>

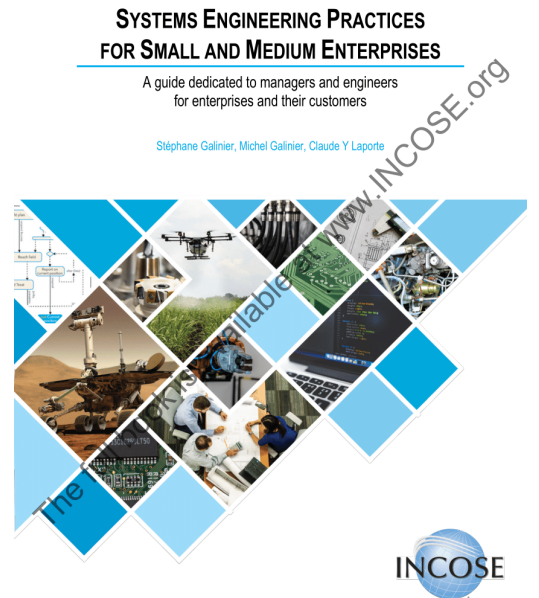
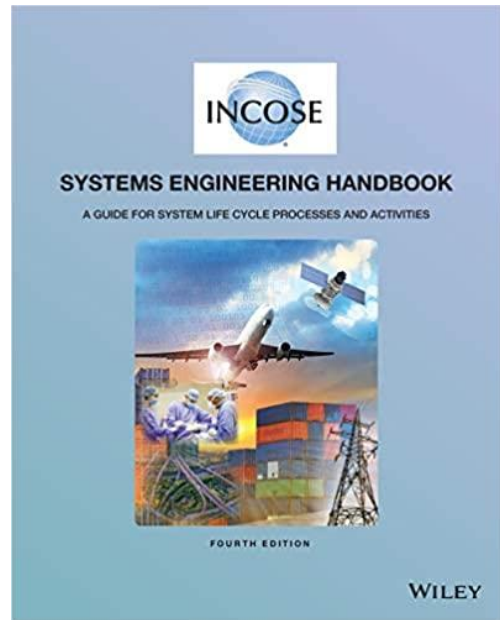


Our next big event:

- Torrance Marriott (near Los Angeles, CA)
- Hybrid Event – change from 2022 approach
- Focused on Collaborative Work
 - Joint efforts between Working Groups
 - Push toward products



Publications

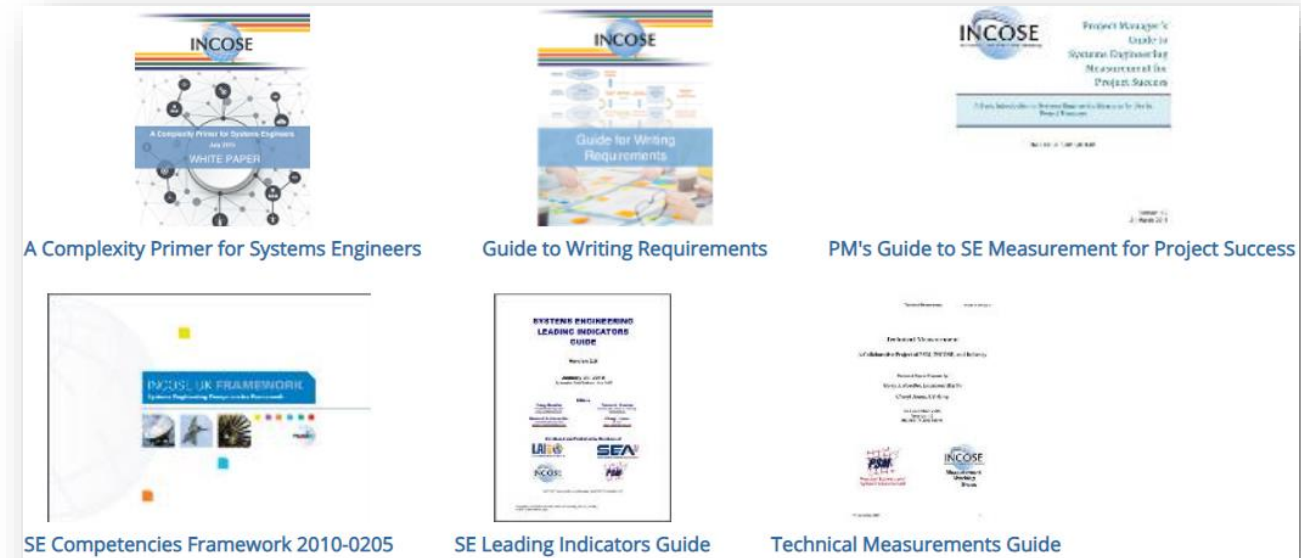
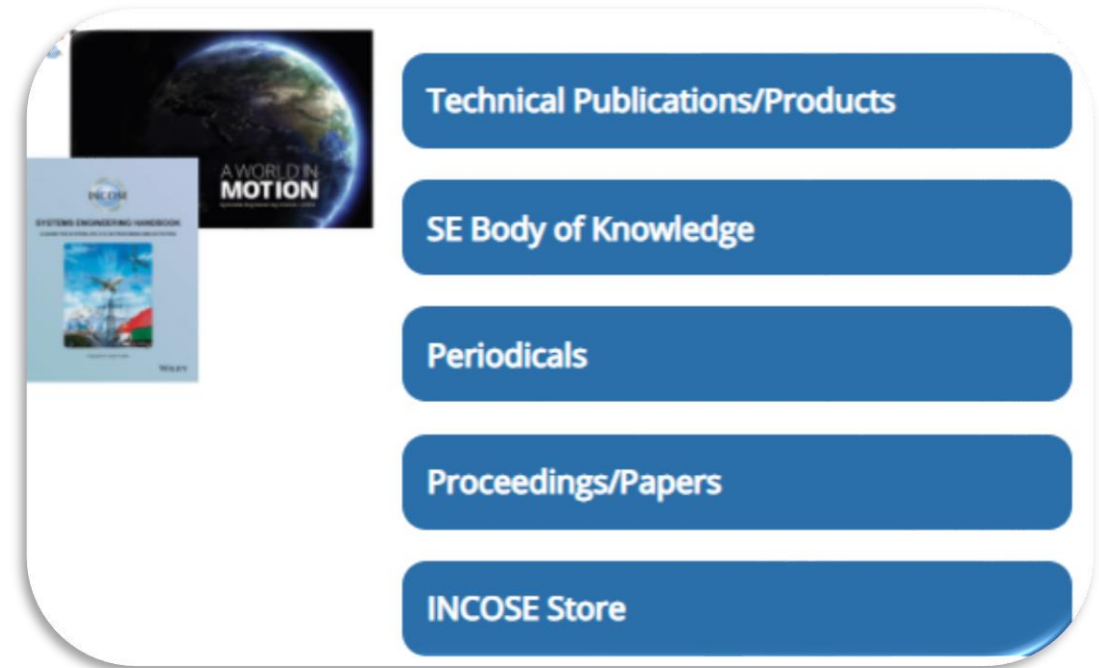


<https://www.incose.org/products-and-publications/se-handbook>



INCOSE Products

- Technical Publications/Products
 - SE Journal,
 - INSIGHT Magazine
 - INCOSE Newsletter
 - Members have access to free soft copy downloads: www.incose.org/pubs
 - **NEW!** Member discount code for all Wiley publications
www.incose.org/wiley
- SE Body of Knowledge (SEBOK)
 - <https://www.sebokwiki.org>
- Periodicals
 - www.incose.org/periodicals
- Proceedings/Papers
 - www.incose.org/papers
- INCOSE Store
 - Purchase and order INCOSE products via connect.incose.org/store



INCOSE Foundation

Committed to rewarding skills through scholarships for those engaged in finding solutions to complex technical challenges at all stages of their education or career.



Offers possibilities for people to pursue goals that anticipate the future – for them and for the world.



Scholarships Include:

ISEF, the International Science and Engineering Fair INCOSE Award to a pre-college student

The Chesapeake Chapter Award

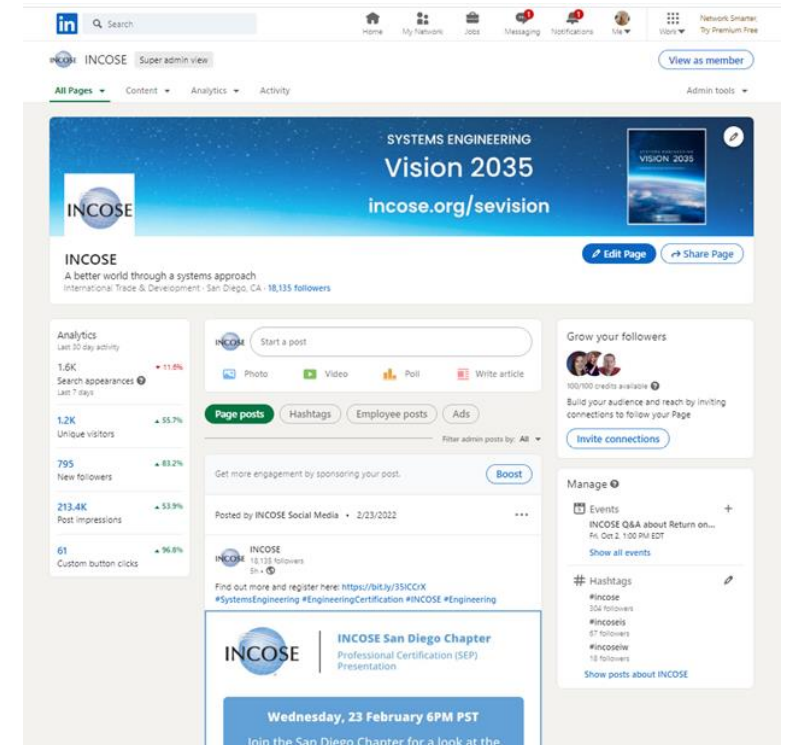
The Stevens Doctoral Award for Promising Research in Systems Engineering to a PhD Candidate

The James E. Long Award for Post Doctoral work

Engage with INCOSE Follow us on social media

Follow, like, comment, and share on all INCOSE social media platforms.

- LinkedIn:
<https://www.linkedin.com/company/44559/>
- LinkedIn Group:
<https://www.linkedin.com/groups/7499834/>
- Facebook
- Twitter
- Instagram
- More to come



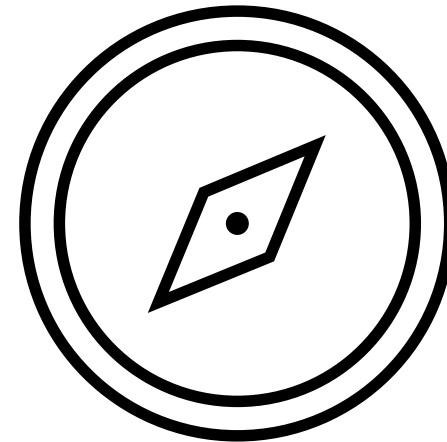
Breakout Session

Discuss today's topic

Ask any questions about INCOSE

Find out where you want to engage with INCOSE

E.g., "Does INCOSE have anything like...?"





2023

Annual **INCOSE**
international workshop
Torrance, CA, USA
January 28 - 31, 2023

HYBRID EVENT

www.incose.org/iw2023



SAVE THE DATE



Welcome Center Feedback

We want YOUR
Feedback on
today's Welcome
Center event

- What did you **like** about this Welcome Center event today?
- What can be **improved** for future Welcome Center events?
- How else do you want to be **supported** to become more involved within INCOSE?

Contact us with any questions about INCOSE: nme@incose.net

Questions?

INCOSE:

*The global professional association
for systems engineers*



International Council on Systems Engineering

A better world through a systems approach

For more information contact marcom@incose.net
www.incose.org